

A satellite-style photograph of the Earth from space, showing the Western Hemisphere. The continents of North and South America are visible, with city lights glowing across the landmasses. The Earth's atmosphere is a vibrant blue, and the background is a dark, star-filled space.

CAB Chair Report ExMC

Steven Margis

Foz do Iguaçu, Brazil

2024-09-26

Steven Margis

Steven.T.Margis@ul.com



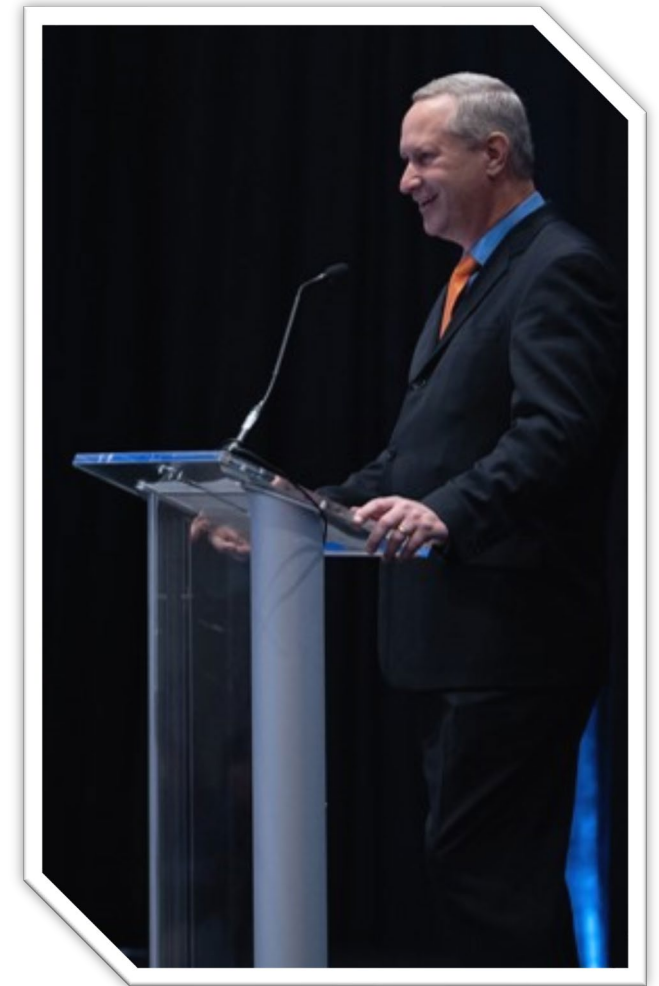
LinkedIn

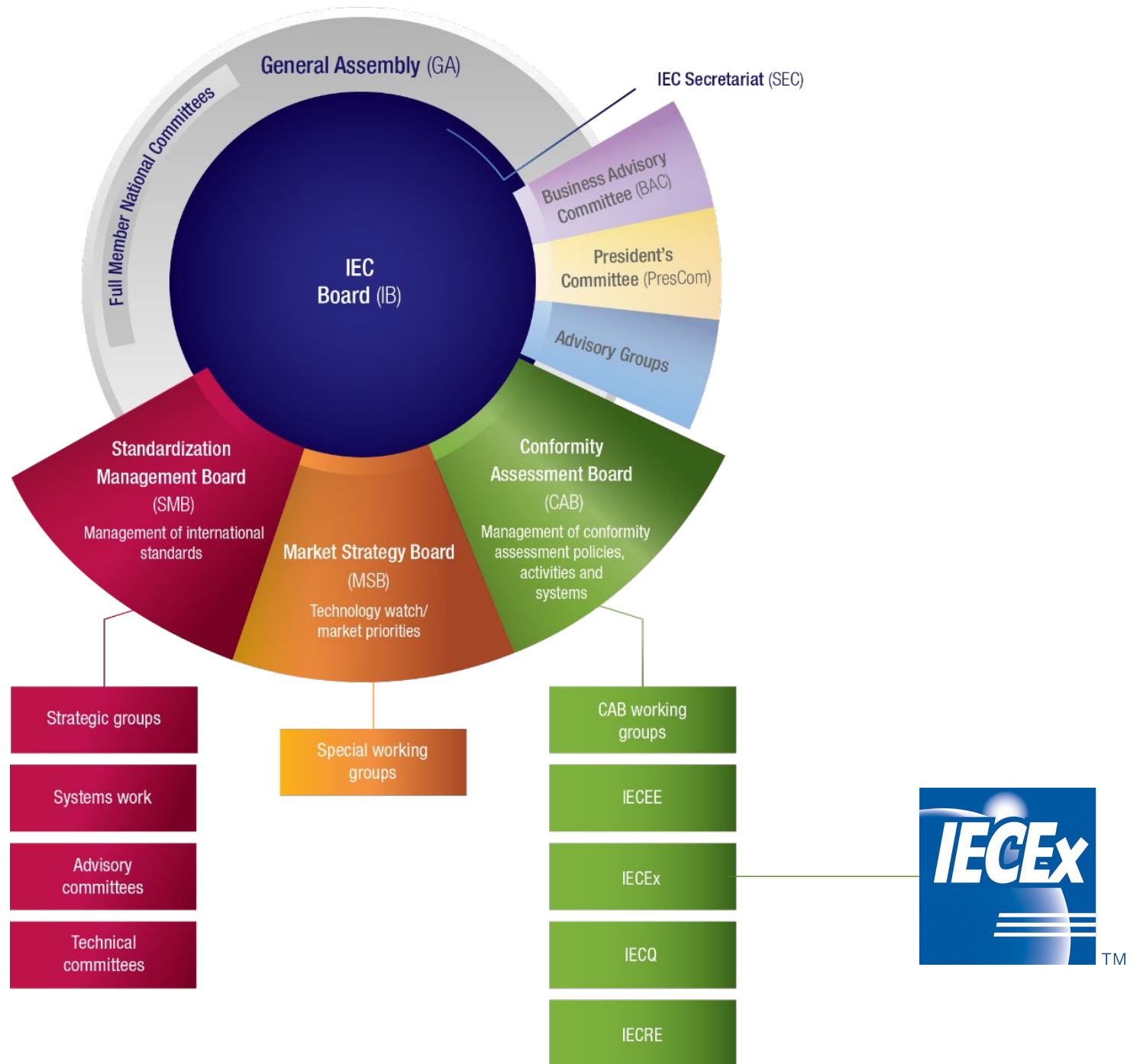


- IEC Vice President and Conformity Assessment Board (CAB) Chair (2024 -)
 - CAB member (2014-2019, 2022 - Present)
- Past IECEE Chair (2022-2023)
 - Vice Chair (2019-2021)
- USNC/IECEE Vice Chair (2011 - Present)



- Director, Conformity Assessment Programs





Related Areas of Note

- **CAB**

- JSC 1: CAB team for IEC/ILAC/IAF Joint Steering Committee
- WG 10: CAB Policy and Strategy
- WG 11: System Issues
- WG 18: New CA Services Radar
- WG 19: Business Transformation
- TF AI: Artificial Intelligence
- TF CASCO
- TF Long Term Sustainability (LTS)

- **IEC Board**

- I-NRG: Innovation & New Revenue Generation
- TF 5: SMART Standardization and Conformity Assessment
- TF 7: Long-Term Sustainability of IEC (LTS)

- **BAC**

- ahG SMART Business Model
- BAC / LTS

- **GRAC**

- Risk Framework [Risk Register]

IEC CAB SOP

Managed by IEC CAB WG 10



IEC CA Strategic Actions (2022-2024)		Strategic Goals
1	Increase existing IEC CA services	1 3 4 5 6
2	Investigate opportunities for new IEC CA services	1 3 4 5 6 7
3	Increase digitalization of services and methods	1 2 5 7 9
4	Programmes for electrification, e-waste reduction, energy testing	3 4 5 6 7
5	Develop programmes to interest regulators and new experts	7 9
6	Foster closer relations with relevant organisations	5 6 7 9
7	Increase agility/speed of decisions and processes	8 9

<https://www.iec.ch/strategic-plan>


<https://www.iec.ch/basecamp/iec-cab-operational-plan>

A Vision

IEC CAB Chair

- **OneIEC**
 - The voice of IEC CA in support of the IEC
- From Reactive to **Proactive**
 - From Governance through IEC CA Systems
 - Informed membership
 - Seek bi-directional communication
- Engaged Inside **AND OUTSIDE** the IEC
 - CASCO ... IAF / ILAC
- **Infrastructure and Growth**
 - SROP ...CA Directives ... CA 01 ...
 - Global Reach (ORBs, Affiliates, ...global transparency ... new services, new markets)
 - **SMART** aligned



The background of the slide features a glowing blue globe of Earth, held by a dark, metallic robotic hand. The globe is the central focus, with a bright blue glow emanating from it. The background is a dark blue field with a complex, interconnected network of lines and nodes, resembling a digital or data network. The overall color palette is dominated by various shades of blue, from deep navy to bright cyan.

IEC Conformity Assessment Board **IECEX ExMC**

Foz do Iguaçu, Brazil
2024-09-26



IEC Conformity Assessment Board

'Deep Dives'

